

Seafox 5

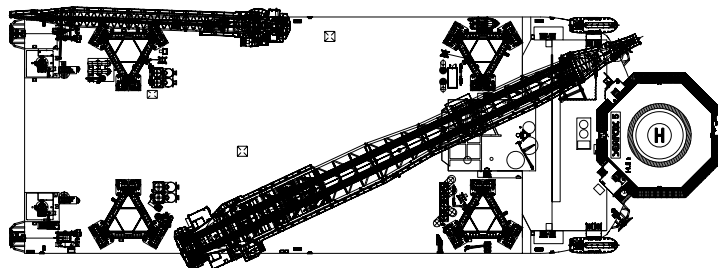
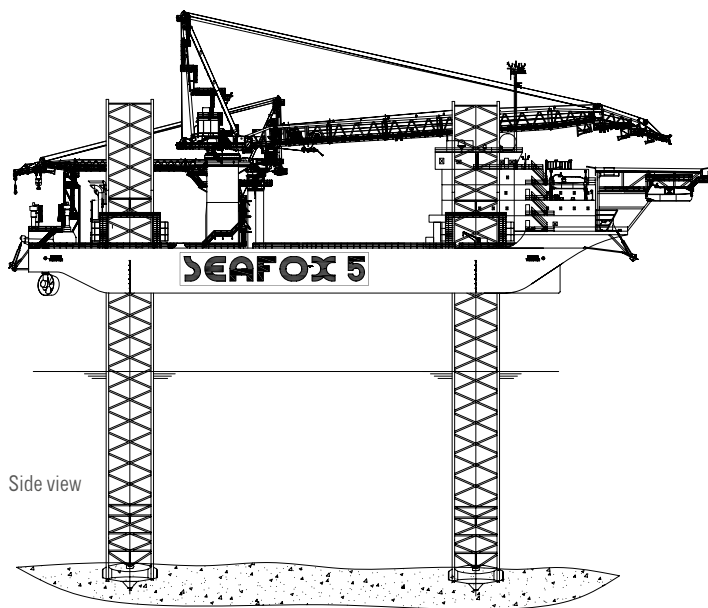


MAIN CRANE CAPACITY 1200 t | ACCOMMODATION 150 POB | MAX WATER DEPTH 65 m | DECK SPACE 3750 m²

Seafox 5 is a four-legged, self-elevating, self-propelled DP2 jack-up unit for accommodation, construction, transportation, installation, maintenance, and well services. The unit was built to American Bureau of Shipping (ABS) classification requirements. Seafox 5 is specifically designed to withstand harsh environmental offshore conditions and is capable of operating throughout the year in water depths of up to 65 meters. The Seafox 5 has a crane capacity of 1,200 MT and is designed with a jacking system for quick and frequent usage. The unit offers permanent accommodation for 150 Persons on Board (POB) and has an accepted UK Safety Case for accommodation, maintenance, and well-service activities in the Dutch and UK sectors. The range of leisure facilities and health and well-being amenities allow for a pleasant experience for those on board.

Seafox 5

Accommodation & Multi-support Unit



GENERAL

Name	Seafox 5
Flag / P.O.R	Isle of Man / Douglas
Design	KFELS MPSEP
Year built / Conversion date	2012
Class	ABS A1 SEU AMS ACCU DSP-2 CRC ENVIRO-OS
Callsign	2FEP5
Imo nr.	9598737

DIMENSIONS

Length	115.0 m
Max. Length	151.0 m
Breadth	50.0 m
Depth	9.75 m
Loadline draft	5.20 m

DECK

Deck capacity	10 t/m ²
Deck space	3750 m ²

LEGS

Number of legs	4
Max Water Depth	65.0 m
Length of legs	106.0 m
Type of legs	Triangular open truss
Spud Can details	110.8 m ²

HELICOPTER DECK

Suitable	S92, EH101 including refuelling
D-value	23 m
Safe Working Load (Tonnes)	14.6 t
Compliant	CAP 437, BSL D 5-1, HCA

POWER GENERATION

Electricity Diesel/Electric	4x 3580 eKW, 11 kV, 60 Hz 1x 1840 eKW, 690 V, 60 Hz
Emergency Diesel Generator	1x 480 eKW, 690 V, 60 Hz

Details in this specification are correct at the time of publishing. However they may differ from time to time due to project specific alterations. Upon request project specific arrangements and specifications can be provided.

JACKING SYSTEM

Type jacking system	Electric rack & pinion
Average speed	0.7 - 1.4 m/min

VARIABLE LOAD

Operational	7000 t
-------------	--------

LIFE SAVING EQUIPMENT

Rescue Boat	1
Lifeboats/Type	4x 75 person (98 kg)
Liferafts/Type	6x 25 person

ENVIRONMENTAL SURVIVAL CRITERIA

Water depth (incl tide & surge)	65.0 m
Max wave height	20 m
Ass wave period	14.6 sec
Surface current	1.0 m/sec
Wind speed	39.0 m/sec
Airgap	20.0 m
Penetration	3.0 m

PROPULSION

Propulsion	Diesel-electric, Kongsberg DPII
Thrusters	4x 3000 kW, Fwd retractable
Speed	8-10 knots

MOORING SYSTEM

Mooring winches	4x single drum, 75 t, 1000 m wire
Achors	4x 9.3 t
Anchor type	Delta Flipper

CRANES

Port Crane	Liebherr BOS 4200 - 50 Max: 50 t @ 42 m radius
Starboard Crane	Liebherr BOS 45000 -1200 Crane 3 blocks, 1200 t @ 25 m radius / 200 t / 50 t
Stern Cranes	N/A

ACCOMMODATION

Capacity	150
Facilities	Galley, Mess room, Stores, Recreation rooms, Gym, Change room, Sick bay, Conference room, Offices, HVAC, Internet room